

Cape Coral R/C Park Flying Site Safety Rules

FIXED WING SAFETY RULES Gas, Nitro, Electric and Turbine

General Rules

1. All pilots must follow these safety rules at our flying site.
2. The AMA safety codes shall be incorporated into the club's safety rules and be complied with.
3. Only members and guests with current AMA cards may be permitted in the pit area between the two chain link fences.
4. Any guest without an AMA card must be accompanied by a member. Guests shall be the responsibility of the inviting AMA member.
5. No child under the age of 12 shall be allowed on the flight line or in the pit area at any time without adult supervision.
6. Guest flyers are required to have a current AMA membership card and to be accompanied by a club member when flying. All guest flyers shall follow the club safety rules and are the responsibility of the club member.
7. On weekdays, fueled engines may be started after 8:00 AM. On Saturday and Sunday, fueled engines may be started no earlier than 9:00 AM. Gliders and electric planes may fly after sunrise. All planes and helicopters must cease flying when the Park closes.
8. When flying their aircraft, all R/C pilots must stand on one of the four designated flight stations, with one pilot per station. Only 4 aircraft may be in the air at one time. No flying is allowed other than from the designated flight stations.
9. There shall be only one spotter or assistant in a flight station with a pilot at any time.
10. Announcing all calls such as "Taking Off", "Landing", "Man on the Field", "Dead Stick" must be loud enough to be heard at all flight stations. Aircraft in the process of landing will have preference over those lined up for takeoff. Dead Stick aircraft have highest preference over all other aircraft.
11. No pets are allowed beyond the south safety fence.
12. No flying is permitted while work crews are in the area or the flight path.
13. When starting an engine/motor of any aircraft, ensure that the prop-wash and/or exhaust are at a safe distance away from all members and guests.
14. All aircraft must be restrained when an engine/motor is being started. No aircraft engines or electric motors may be started in the pavilions.
15. Take-offs, landings, and "touch and goes" will be executed from the paved runway. All flying will be to the north of the paved runway in a racetrack pattern. The nearest portion of the pattern will be the north edge of the paved runway.
16. Pilots must have a fire extinguisher when at the field (Fire Dept. requirement)

17. When there is a crosswind, the first pilot taking off shall determine the direction of flight. If there is a wind shift, the pilot flying during the wind shift may call out an intention to change direction.
18. Airfield Marshalls may alter the direction of flight as needed.
19. Flying is prohibited
 - A. Over or east of NW 9th Pl. (the road to the field). Penalties are as follows:
 - 1st violation penalty is grounding for 30 days, 2nd violation penalty is 6 months grounding and 3rd is removal from the club for 1 year from the date of the first violation.
 - Membership is allowed after completing the full year. Penalties are reset after 1 year.
 - B. Past the chain link fence next to (or south of) the flight stations continuing onto the canal, and to the dirt piles to the west of the field. The penalty for a violation of section B will be grounding for the day.City flight box is shown on page 4.
20. All prototype aircraft can only be flown by club members.
21. Any member flying "First Person Vision" must have a spotter with them in the flight station during the flight.
22. All members and guest flyers must have their FAA registration number and AMA number clearly marked on their aircraft before launching it.
23. All airplanes must have an easily accessible kill switch on the airplane. There must also be a means to stop the engine/motor from the transmitter.
24. All planes with running engines/motors in the pit area will be under the physical control of their pilots.
25. Taxiing in the pit area is strictly prohibited.
26. Giant Scale planes shall be started only on one of the three taxiways leading out to the runway. Starting of engines/motors on the runway is prohibited.
27. These rules may be altered for club-sanctioned contests and events.

Electric Powered Aircraft

1. Electric planes must be armed on the tables provided outside each pavilion or in one of the taxiways.
2. All propellers shall be removed from any electric powered aircraft before doing work on any part of the aircraft for maintenance, repair, and programming while the aircraft has electric power applied. This includes planes with off/on switches.
3. Planes without electric power applied to the aircraft may have propellers attached to the plane.

Gas & Nitro Fueled Aircraft

1. Mufflers are required on all gas and nitro fueled engines irrespective of engine size. The muffler must allow the engine to stay within the AMA sound level requirements.
2. Engine break-in running or fixing is allowed only at the west end or east end of the pit
3. area at least 50 feet from the end pavilions.

Gas Turbine Aircraft (Jets)

1. All Gas Turbine pilots are required to have access to a water fire extinguisher and must have a B/C or CO2 fire extinguisher in their possession at the field. They are required to have the B/C or CO2 extinguisher visibly present for all engine starts.
2. All Gas Turbine pilots are required to have a designated spotter with them on the flight pad and when flying.
3. All Gas Turbine pilots must have an AMA Turbine waiver card before they may fly at our Field. **If the pilot is visiting from another country and does not have an AMA membership, proof of membership in their home organization will be required.**
4. Any visitor flying a jet must be checked out by a Club member who has a Gas Turbine waiver before they may fly at our field.
5. Any Gas Turbine pilot who runs off the end of the runway **past the cut grass** when landing must shut the engine down and collect the plane by hand.
6. **When taking off eastbound, a left turn towards the north will be made as soon as possible, within 100' of the departure end of the runway.**
7. **The flight box and all maneuvers will be made from the east end of the runway westward. No split-S type maneuvers on the east (right) side.**
8. **No flight faster than 150mph. If you or your plane is not capable of this, no flight will be allowed.**

Gliders

1. All glider pilots must abide by the fixed wing safety rules.
2. Only a person hand launching a glider may stand outside of a flight pad but must immediately be adjacent to the flight pad next to the fence. No hand launcher shall impede the takeoff or landing of any aircraft.
3. After hand launching the glider, the person must return to the flight station.

Floatplanes

1. The floatplane flying area is defined as the area within Argosy Lake.
2. Floatplane flying must terminate when a boat enters Argosy Lake.
3. The flight box for Argosy Lake is over the lake area.
4. Only two floatplanes may fly at one time.

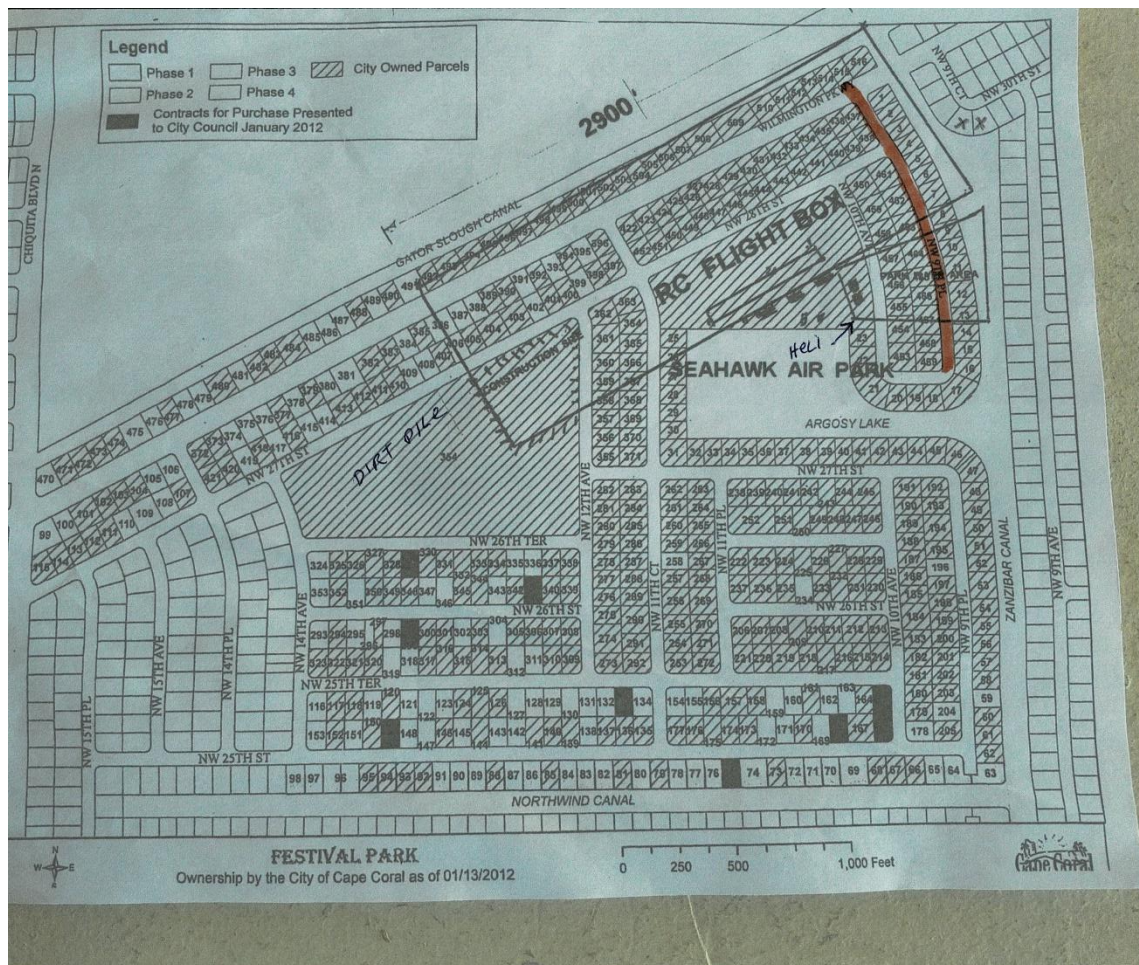
Helicopters & Drones

1. Helicopters must yield to: 1.) all cars and trucks on 10th Avenue and 2.) to all cars and trucks using the driveway to the park.
2. Helicopters must not be flown over the fixed wing flying area when fixed wing pilots are present at the park.
3. Flying over the parking lot is prohibited.
4. Flying over the helipads is limited to take offs, landings, and slow hovering practice.

5. Autorotation practice may be conducted using the helipads as targets.
6. Each pilot must be at least 10 feet away from their helicopter during its flight.
7. Only two helicopters may fly at the same time.
8. Once a pilot's helicopter is airborne, the pilot may use the helipad as a pilot station -- provided no other helicopters are in operation.
9. Only AMA members and escorted guests may be allowed east of the fence line at the helicopter field.

Charging Station

1. No liquids are allowed near the charging station.
2. Charge only one battery at a time during peak usage.
3. Limit charging times during non-sunny days.



RC Flight Box